

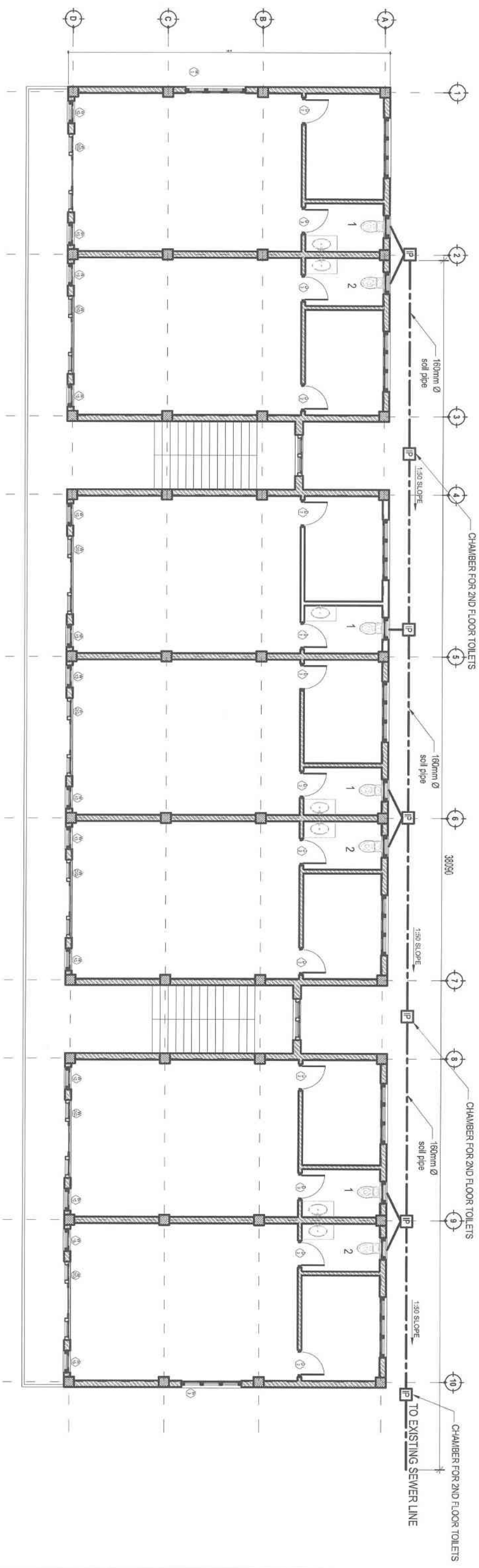
**WATER SUPPLY AND SEWERAGE**  
**REMODELING OF SERVICE CENTER BUILDINGS**  
CHANGZAMTOK INDUSTRIAL ESTATE



Designed By :  
National Housing  
Development Corporation Ltd.  
Thimphu

For :  
Ministry of Economic Affairs,  
Thimphu





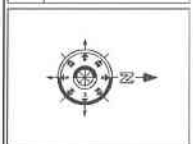
**LEGEND**

	BRICK WALL
	RCC
	STONE
	PCC
	EARTH
	TIMBER

**PROJECT: SERVICE CENTER REMODELING**

SCALE:	1:120	DRAWING TITLE:	SEWERAGE NETWORK LAYOUT
DATE:	MARCH-2022	DWG. NO.:	WS-01

ARCHITECT	
GM/DP/S	
CEO/INH/DCL	

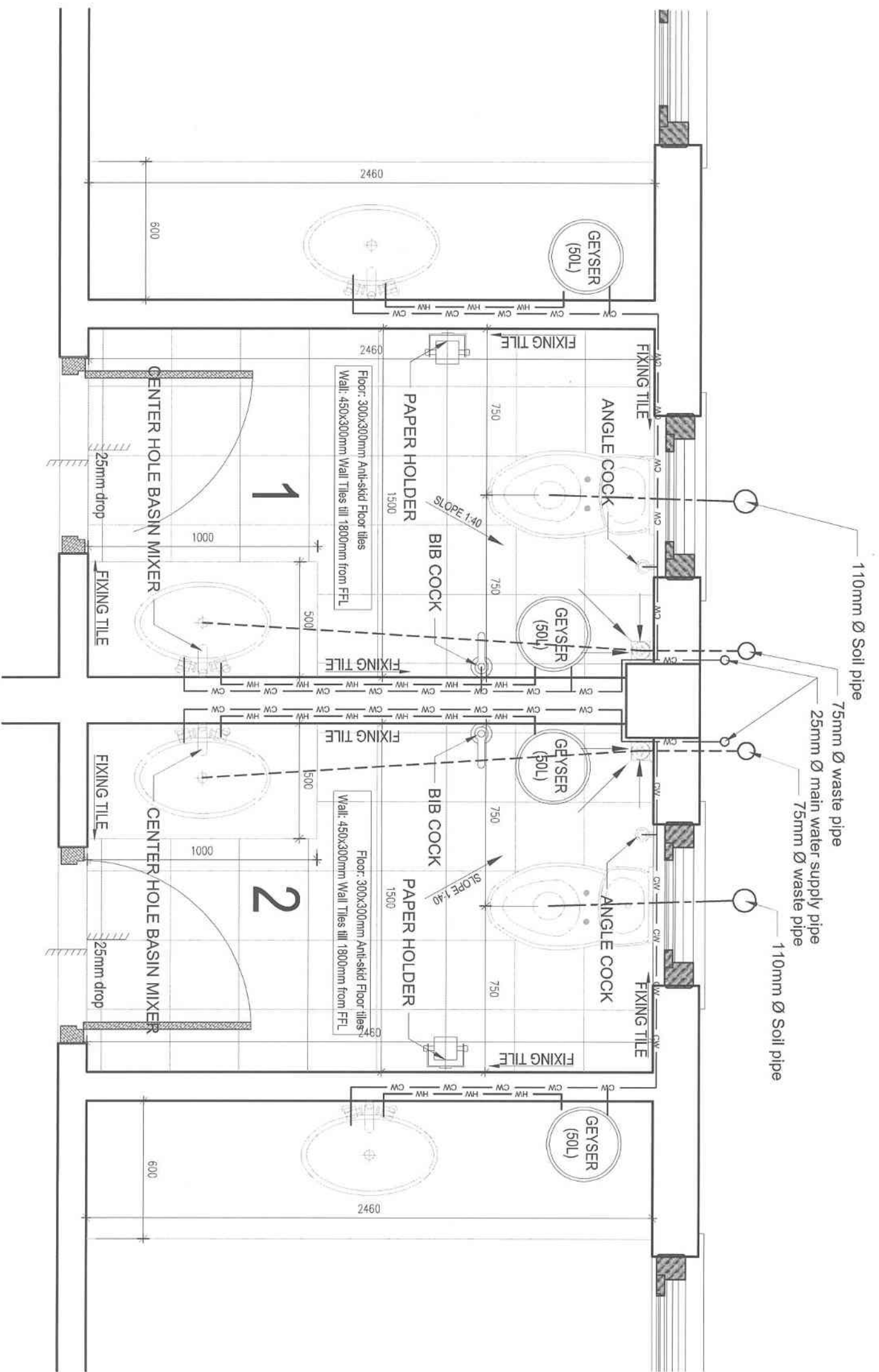


**NOTES:**

- All dimensions are in millimeters.
- Do not measure from the drawing.
- Report any discrepancies to the Architect.
- Contractors or site engineers to verify all dimensions on drawings and on site before commencing any work.

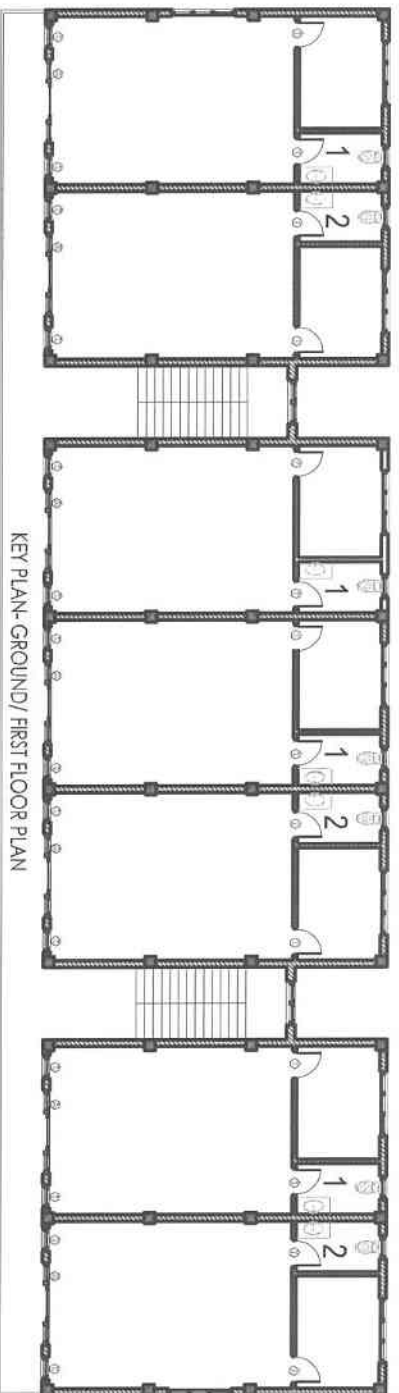
REVISION:	DATE:	REMARKS:

**National Housing Development Corporation Ltd.**  
 Design & Planning Services,  
 PO Box 1439  
 Thimphu  
 Tel # (TAXI: 0975-2-32314 / 7332734 / 332735),  
 Fax: 337203, Website: www.nhdcl.tz



**LEGEND**

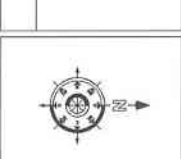
	BRICK WALL
	RCC
	STONE
	PCC
	EARTH
	TIMBER



**PROJECT: SERVICE CENTER REMODELING**

SCALE:	1:120	DRAWING TITLE:	TILET LAYOUT PLAN
DATE:	MARCH-2022	DWG. NO.:	WS-02

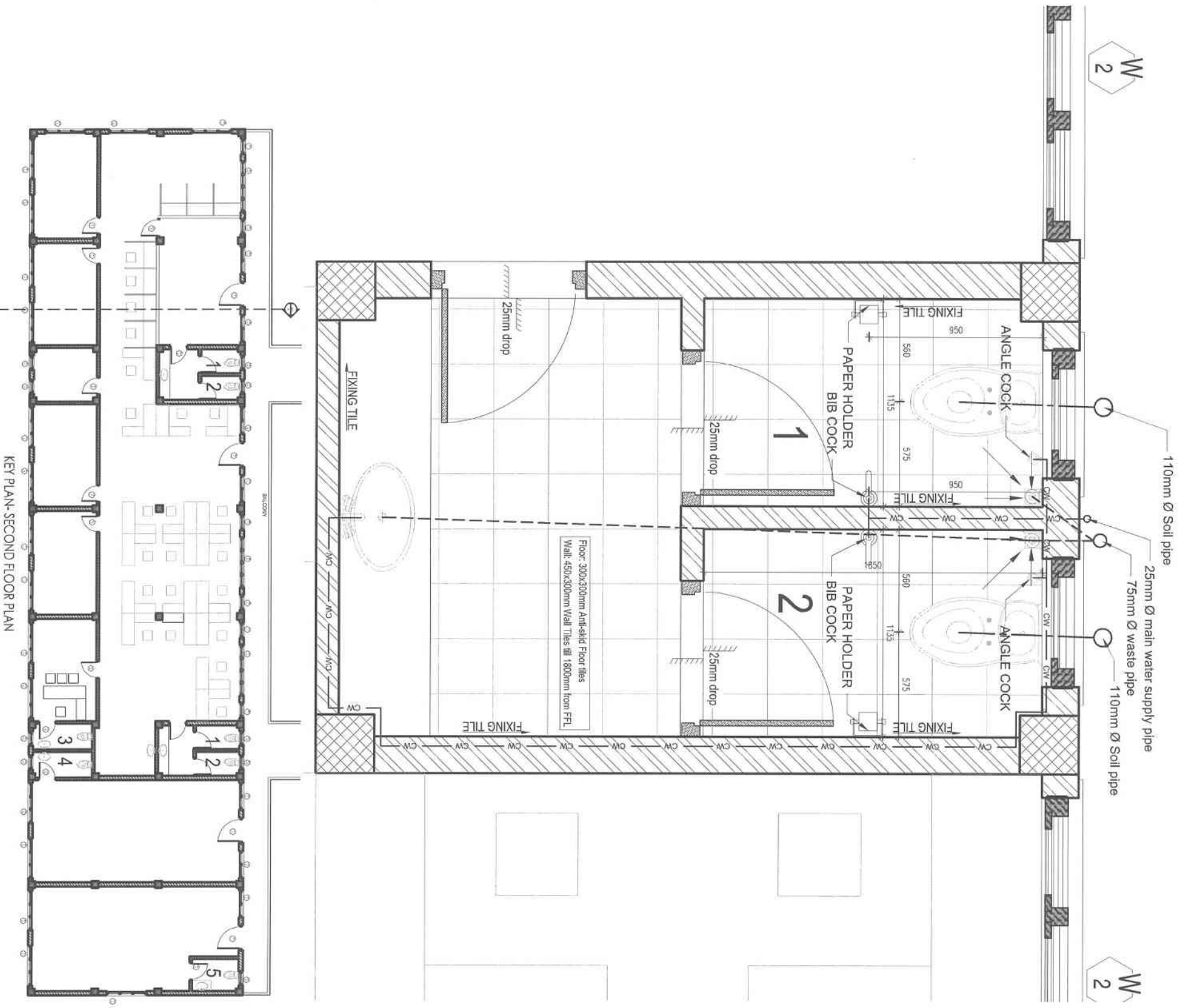
ARCHITECT	
GM(DPS)	
CEO(NHDCI)	



- NOTES:**
- All dimensions are in millimeters
  - Do not measure from the drawing.
  - Report any discrepancies to the Architect.
  - Contractors or site engineers to verify all dimensions on drawings and on site before commencing any work.

REVISION:	DATE:	REMARKS:

National Housing Development Corporation Ltd.  
 Design & Planning Services,  
 PO Box 1439  
 Timphu  
 Td # (PABX: 00975-2-323147/332734/332735)  
 Fax: 331703/Website: www.nhdc.lk



Floor: 300x300mm Anti-skid Floor Tiles  
 Wall: 450x450mm Wall Tiles @ 1800mm from FFL

**LEGEND**

	BRICK WALL
	RCC
	STONE
	PCC
	EARTH
	TIMBER

**PROJECT: SERVICE CENTER REMODELING**

SCALE:	1:120	DRAWING TITLE:	TILE LAYOUT PLAN
DATE:	MARCH-2022	DWG. NO.:	WS-03

ARCHITECT: Poshupati Dyoji

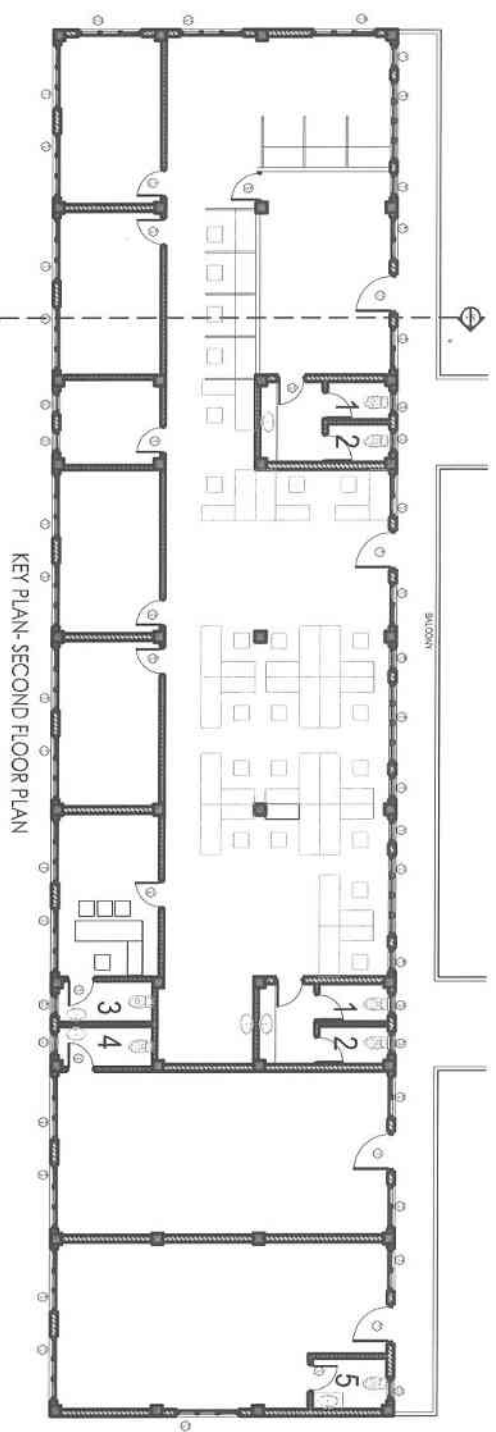
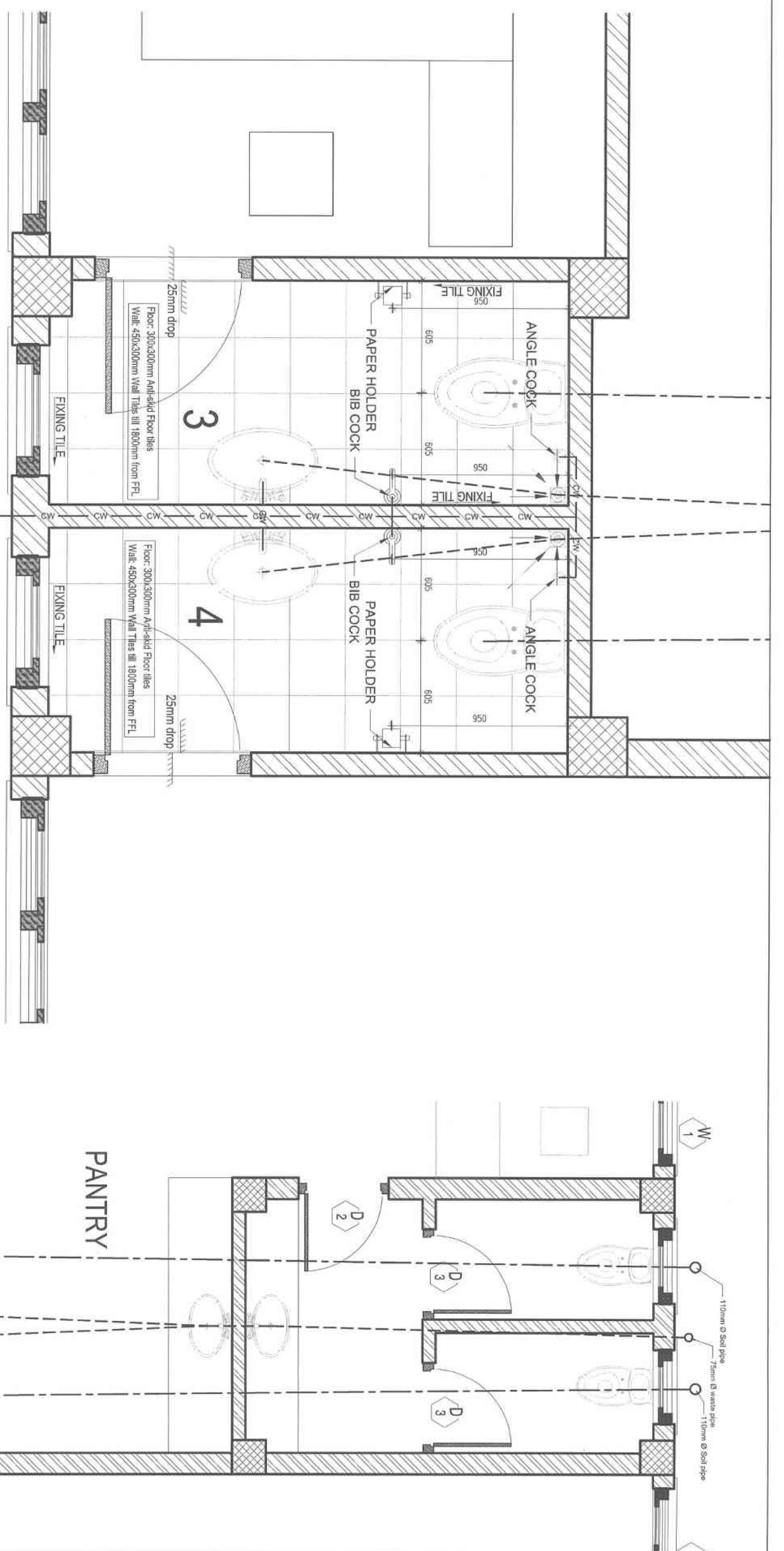
GM(DPS): [Signature]

CEO (NHDCI): [Signature]

- NOTES:**
- All dimensions are in millimeters
  - Do not measure from the drawing.
  - Report any discrepancies to the Architect.
  - Contractors or site engineers to verify all dimensions on drawings and on site before commencing any work.

REVISION:	DATE:	REMARKS:

National Housing Development Corporation Ltd.  
 Design & Planning Services.  
 PO Box 1439  
 Thimphu  
 Tel # (Bhutan) 0975-2-32147/332734/332735.  
 Fax: 331703 Website: www.nhdc.lh



**LEGEND**

	BRICK WALL
	RCC
	STONE
	PCC
	EARTH
	TIMBER

**PROJECT: SERVICE CENTER REMODELING**

SCALE:	1:120
DATE:	MARCH-2022
DRAWING TITLE:	TOILET LAYOUT PLAN
DWG. NO.:	WS-04

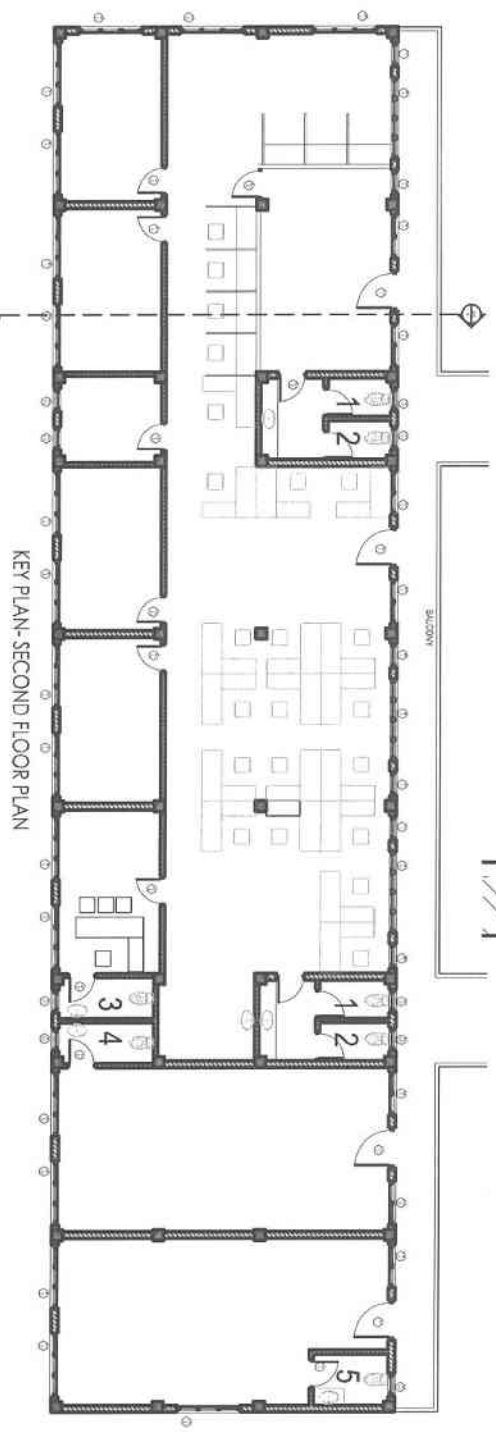
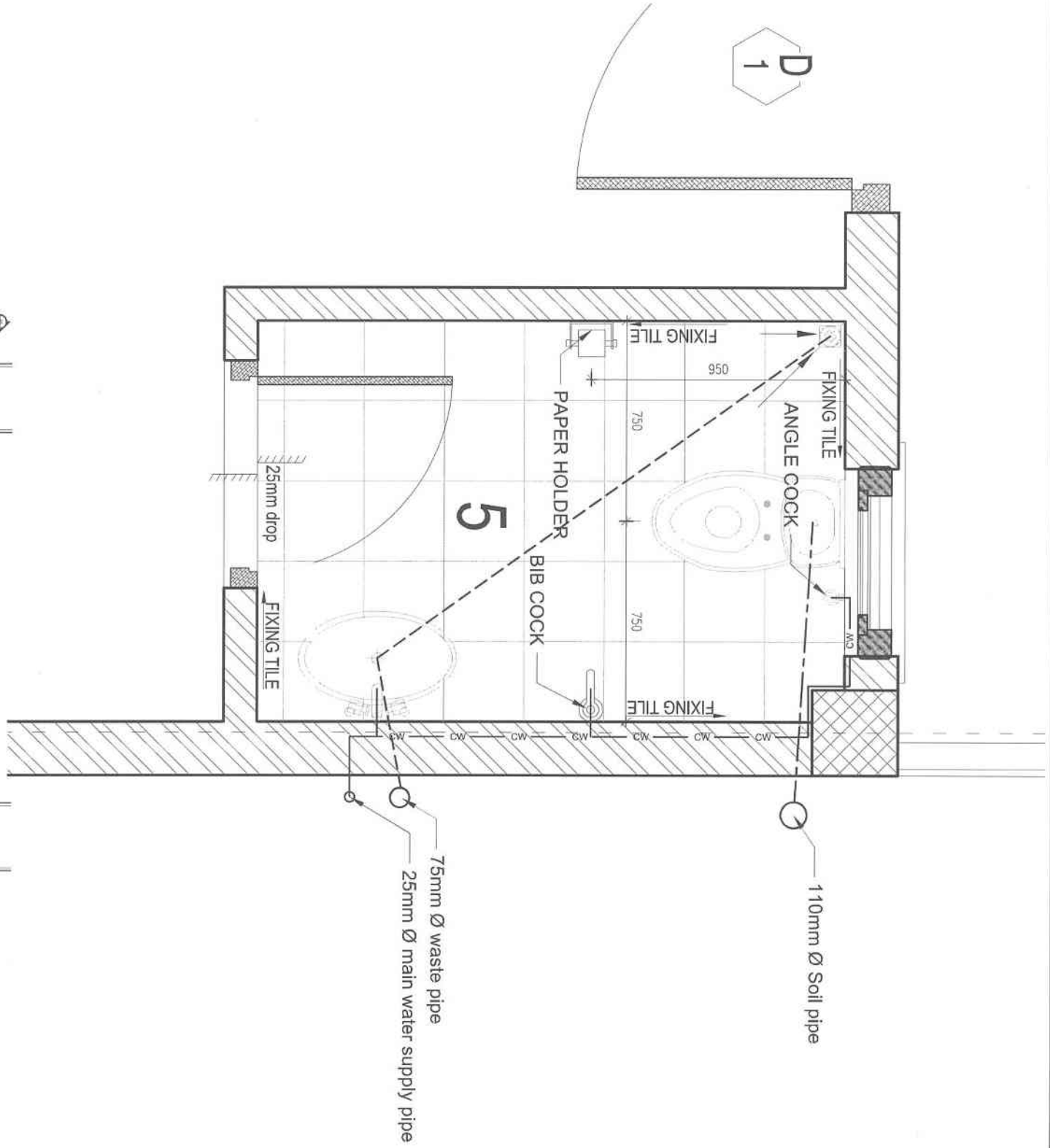
ARCHITECT	
GM(DPS)	
CEO(NHDCL)	



- NOTES:**
1. All dimensions are in millimeters
  2. Do not measure from the drawing.
  3. Report any discrepancies to the Architect.
  4. Contractors or site engineers to verify all dimensions on drawings and on site before commencing any work.

REVISION:	DATE:	REMARKS:

**National Housing Development Corporation Ltd.**  
**Design & Planning Services,**  
 PO Box 1439  
 Thimphu  
 Tel # (PAR): 00975-2-323147/332724/332735  
 Fax: 332703 Website: www.nhdcl.lk



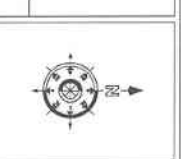
**LEGEND**

	BRICK WALL
	RCC
	STONE
	PCC
	EARTH
	TIMBER

**PROJECT: SERVICE CENTER REMODELING**

SCALE:	1:120	DRAWING TITLE:	TILET LAYOUT PLAN
DATE:	MARCH-2022	DWG. NO.:	WS-05

ARCHITECT	
GM(DPS)	
CEO(NHDCU)	



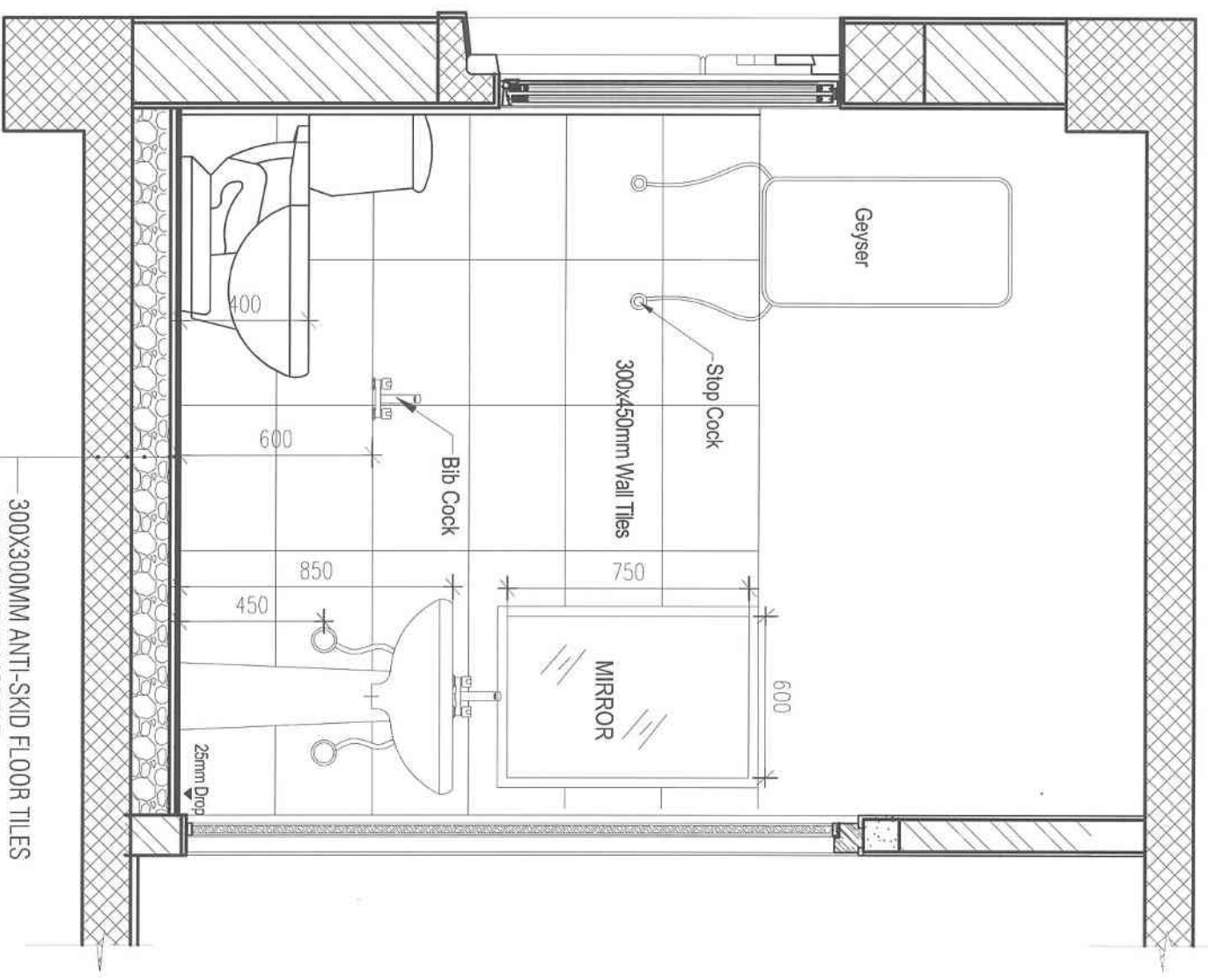
**NOTES:**

- All dimensions are in millimeters.
- Do not measure from the drawing.
- Report any discrepancies to the Architect.
- Contractors or site engineers to verify all dimensions on drawings and on site before commencing any work.

REVISION:	DATE:	REMARKS:

National Housing Development Corporation Ltd.  
 Design & Planning Services,  
 PO Box 1439  
 Thimphu  
 Tel # (PABX: 00975-2-323147/333294/332735),  
 Fax: 331203 Website: www.nhdc.lk





- 300X300MM ANTI-SKID FLOOR TILES
- 15MM CEMENT MORTAR
- 50MM PCC
- 75MM BRICKBAT
- 3 COATS OF BITUMEN
- RCC SLAB

**LEGEND**

	BRICK WALL
	RCC
	STONE
	PCC
	EARTH
	TIMBER

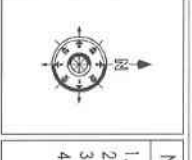
**PROJECT: SERVICE CENTER REMODELING**

SCALE:	1:120	DRAWING TITLE:	TYPICAL TOILET SECTION
DATE:	MARCH-2022	DWG. NO.:	WS-06

ARCHITECT  
  
 Poshupoi Divoil

GM (DPS)

CEO (NHDCU)

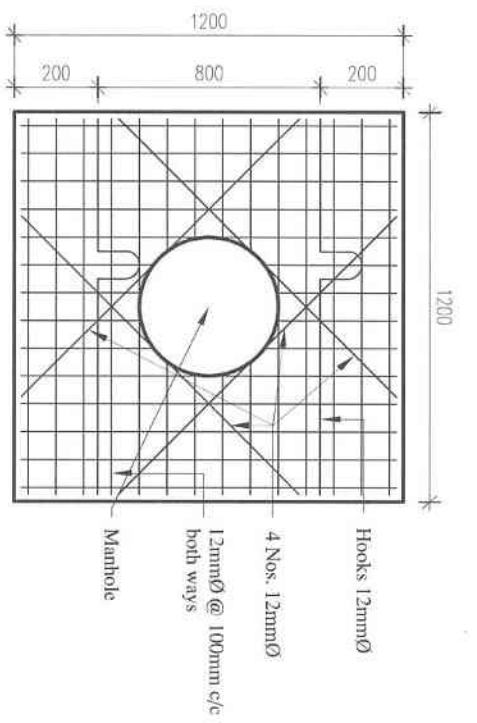


**NOTES:**

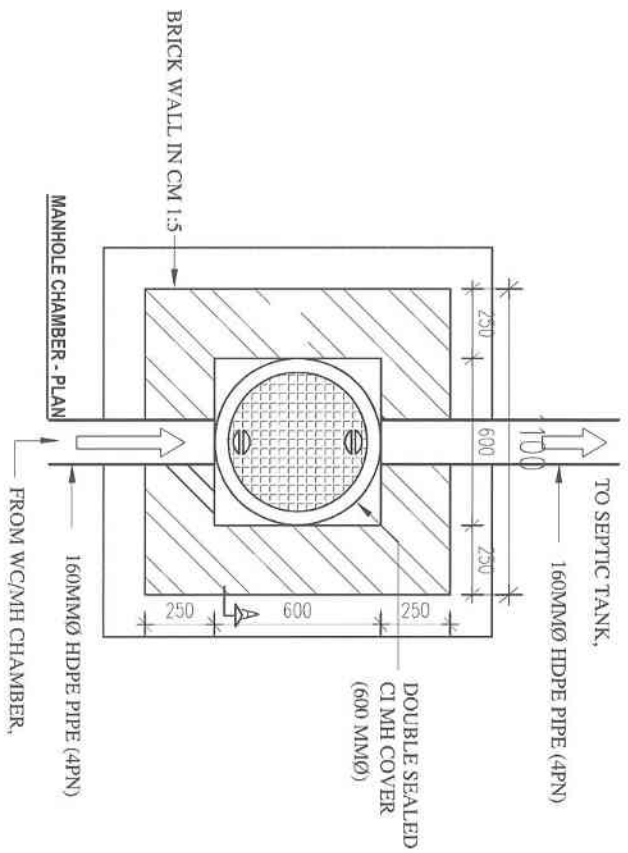
- All dimensions are in millimeters
- Do not measure from the drawing.
- Report any discrepancies to the Architect.
- Contractors or site engineers to verify all dimensions on drawings and on site before commencing any work.

REVISION:	DATE:	REMARKS:

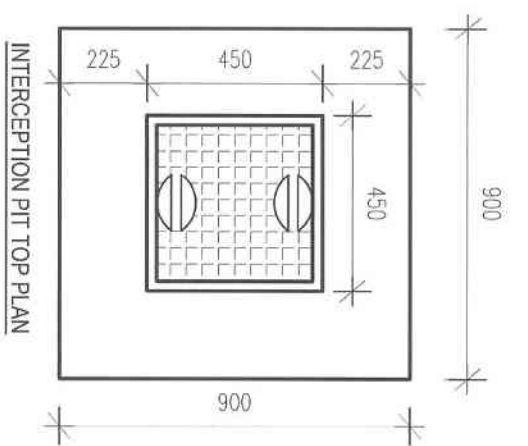
National Housing Development Corporation Ltd.  
 Design & Planning Services  
 PO Box 1439  
 Timphu  
 Tel # (PABX) 09975-2-3231/47/332734/332735,  
 Fax: 332703 Website: www.nhdc.lk



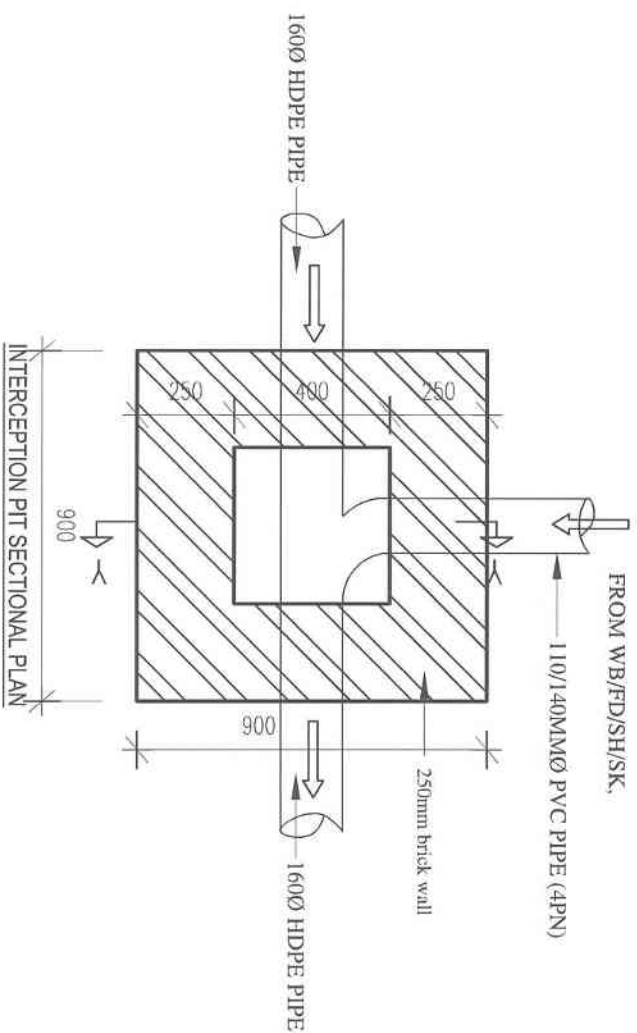
TOP SLAB, GRADE 20 CONCRETE - PLAN



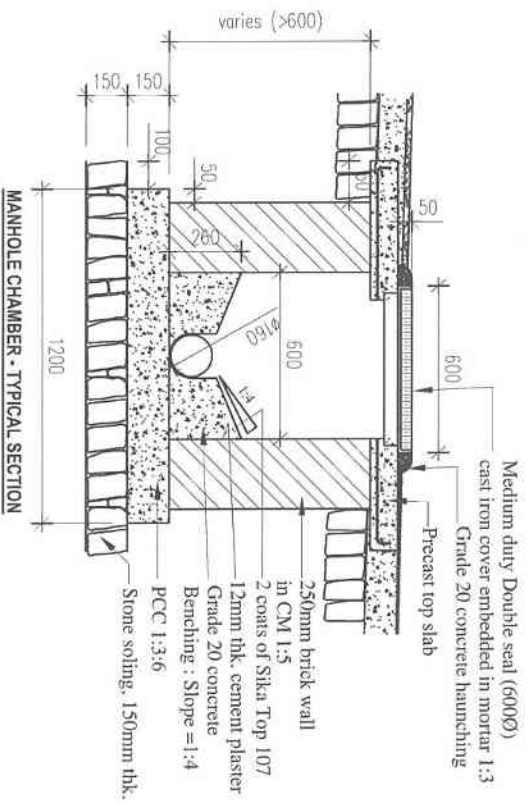
MANHOLE CHAMBER - PLAN



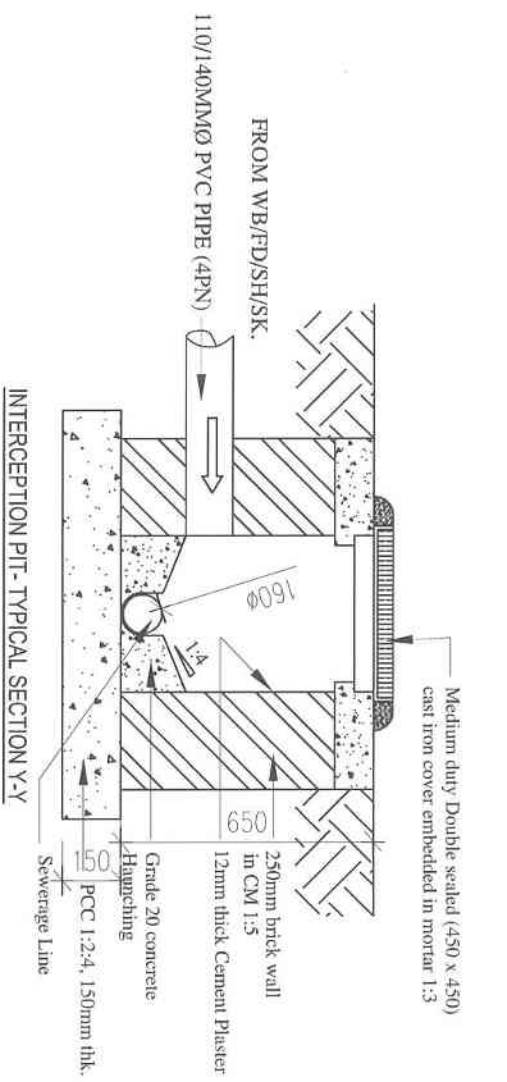
INTERCEPTION PIT TOP PLAN



INTERCEPTION PIT SECTIONAL PLAN



MANHOLE CHAMBER - TYPICAL SECTION



INTERCEPTION PIT - TYPICAL SECTION Y-Y

- LEGEND**
- BRICK WALL
  - RCC
  - STONE
  - PCC
  - EARTH
  - TIMBER

**PROJECT: SERVICE CENTER REMODELING**

SCALE:	1:120	DRAWING TITLE:	SEWER LINE DETAILS
DATE:	MARCH-2022	DWG. NO.:	WS-07

ARCHITECT: Poshupchi Divoil

G.M(DPS): [Signature]

CEO (NHDCI): [Signature]

- NOTES:**
- All dimensions are in millimeters.
  - Do not measure from the drawing.
  - Report any discrepancies to the Architect.
  - Contractors or site engineers to verify all dimensions on drawings and on site before commencing any work.

REVISION:	DATE:	REMARKS:

National Housing Development Corporation Ltd.  
 Design & Planning Services,  
 PO Box 1439  
 Thimphu  
 Tel # (PABN: 00975-2-32314/33234/33235)  
 Fax: 331203/1vchshic: www.nhdcltd